

Resistance Welding Equipment & Supply Co.

2045 East 46th Street, Indianapolis, IN 46205-1472

Phone: (317) 251-9406 Fax: (317) 251-9407

FFA #17

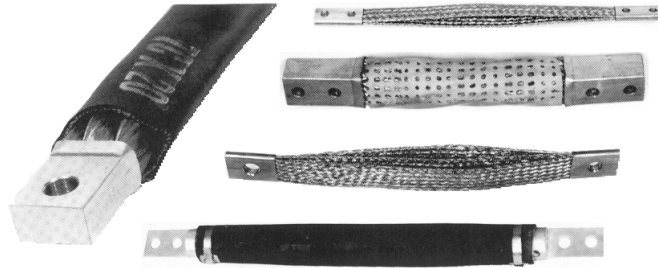
EMAIL:rwesco@iquest.net Web Site: www.spotweldequip.com

“YOUR PARTNER, specializing in RESISTANCE WELDING!”

CABLES FOR RESISTANCE WELDING

Cables / Jumpers

- AIR COOLED
- WATER COOLED
- KICKLESS CABLES
- ALTERNATE POLARITY
- COPPER LAMINATIONS (SHUNTS)
- SPECIALS

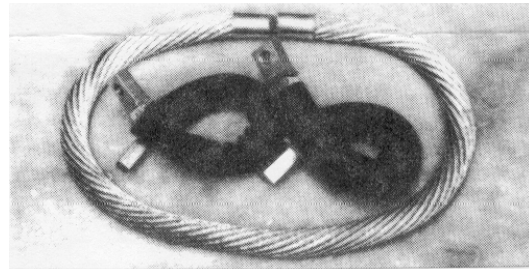
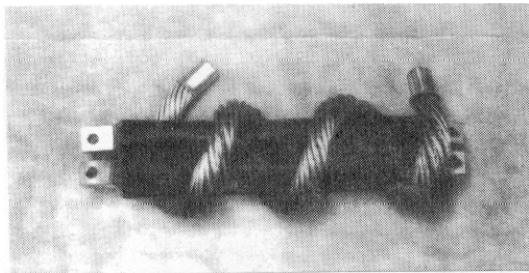


Our line of Air and Water Cooled jumpers will meet your every welding requirement for all types of applications.

AIR COOLED CABLE JUMPERS (ACJ)

This line of Air-Cooled Cable Jumpers are available in circular mill sizes for 400MCM-500MCM-600MCM-750MCM-1000MCM-1200MCM-1500MCM and 2000MCM. Jumpers can be furnished with any combination of terminals shown on the reverse side.

If extra flexibility is required because the installation involves a very sharp bend radii or the application requires extra movement, the “XL” type is recommended (See Pictured Below)



When ordering XL prefix cables:

EXAMPLE: **XL** - **ACJ** - **750 MCM** - **16** - **CFF**
 Extra Flexible Type Circular Mill Size Length in Inches Terminal Designation

Our Line of cables for resistance welding is backed by design, development and testing over a period of some fifteen years. It is further backed by over thirty years of experience in the field of engineering, design, experimental testing, production supervision and the manufacture of resistance welding equipment.

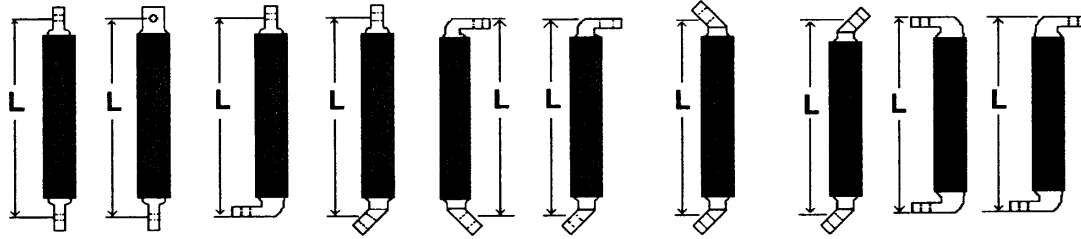
HOW TO ORDER AIR COOLED JUMPER CABLES

Provide:

Type	Terminals	MCM Size	Length
------	-----------	----------	--------

The length is measured from the bolt hole centers at each end of the cable on straight or 45° terminals. It is measured from the extreme ends of 90° terminals.

TERMINAL ANGLE DATA



"CFF" "CFR" "CFL" "CFV" "CLV" "CLVO" "CVV" "CVVO" "CLL" "CLLO"

TERMINAL THICKNESS

MCM	1-1/4" WIDE	1-3/8" WIDE	1-1/2" WIDE
400	3/8"		
500	7/16"		
600	1/2"	7/16"	
750	5/8"	9/16"	
1000	3/4"	11/16"	5/8"
1200	7/8"	13/16"	3/4"
1500		1-1/16"	1"
2000			1-7/16"

TERMINAL LENGTH:

The contact surface length of Air-Cooled Jumpers is 1-9/16" Other Length can be furnished if ordered.

BOLT HOLE SIZE

All Air-Cooled Jumpers are drilled 17/32" unless otherwise ordered.

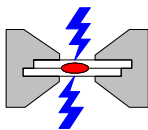
When ordering Air Cooled Jumpers SPECIFY:

EXAMPLE: **XL - ACJ - 750 MCM - 16" - CFF**
 (Extra Flexible Air Cooled 750 MCM 16" long with CFF Lugs)
ACJ - 750 MCM - 16" - CFF
 (Standard Air Cooled 750 MCM 16" Long with CFF Lugs)

ALSO AVAILABLE:

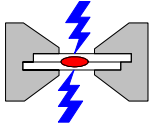
Water Cooled Jumpers
Gun Welder Kickless Cables

Laminated Shunts
Standard Air Cooled Jumpers



Resistance Welding Equipment & Supply Co.

2045 East 46th Street Indianapolis, IN 46205-1472
 Phone: (317) 251-9406 Fax: (317) 251-9407 E-mail: rwesco@iquest.net
 Visit us on the World Wide Web at: www.spotweldequip.com



Resistance Welding Equipment & Supply Co.

2045 East 46th Street Indianapolis, IN 46205-1472
 Phone: (317) 251-9406 Fax: (317) 251-9407 E-mail: rwesco@iquest.net
 Visit us on the World Wide Web at: www.spotweldequip.com

SINGLE CONDUCTOR, WATER COOLED CABLES (WCJ)

Our line of single conductor, water-cooled cable jumpers feature a wide variety of terminals designed to meet all required applications, as shown on the next page.

Water Cooled cable jumpers are available as standard in 300 MCM, 350 MCM, 400 MCM, 500 MCM, 600 MCM, 750 MCM, and 1000 MCM sizes. Other circular mill sizes and/or special terminals can be furnished on request.

These cables feature extruded copper and cast copper terminals depending on the terminal configuration. A phosphorous bronze spring is centered within the copper conductor rope.

- (1) To minimize the possibility of restricted water flow should the cable be subjected to acute bending during operation.
- (2) To act as a filter for broken copper strands and other foreign material to prevent clogged water passages.

The copper conductor ropes are stranded to our specifications for flexibility and long life. The outer cover is a one braid rubber hose specifically sized for flexibility and terminal diameter. The special stranding plus special sizing put together a combination resulting in a quality cable jumper.

TERMINAL END CROSS REFERENCE		
WESCO	FLEX CABLE	UNIFLEX
CB	W-1	B-1
CB2	W-2	B-2
CB4	W-4	B-4
CB5	W-5	B-5
CB6	W-6	B-6
CB6-2	W-6-2	B-6-2
CB7	W-7	B-7
CB9	W-9	B-9
CB11	W-11	B-11
CIF	WIF	N/A
CDB	N/A	BD

To order specify: Type, MCM, Length, and Terminal Designation for both ends

Example: **WCJ** - **300** - **12"** - **CB-4** - **CB-5**
 Type - Circular Mill Size - Length - 1st End Terminal - 2nd End Terminal