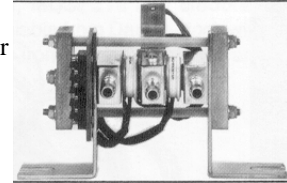


# SCR CONTACTORS FOR EVERY CONTROL

## HS6 STYLE SCR UNITS

HS-6 Design direct double sided water cooled SCR Contactors have proven to be dependable for years in resistance welding controllers. Choose between two popular current ratings with SCR voltage to 1800 Volts.



PART NUMBER	WELDING RATING Amps RMS AT 50% DUTY CYCLE	WELDING RATING Amps RMS AT 100% DUTY CYCLE	SGL. CYCLE SURGE CURRENT (ITSM)	SCR VOLTAGE RATING (PIV) (VRRM)
D08HS6-12	1200	800	5500	1200
D08HS6-14	1200	800	5500	1400
D08HS6-16	1200	800	5500	1600
D12HS6-12	1800	1200	7500	1200
D12HS6-14	1800	1200	7500	1400
D12HS6-16	1800	1200	7500	1600
D12HS6-18	1800	1200	7500	1800

**Water Requirements:**

Amps RMS is achieved with a cooling Flow rate of 1.2 gallons per minute at 40°C water temperature.

**Water Connection:**

Fits 3/8 inch hoses.

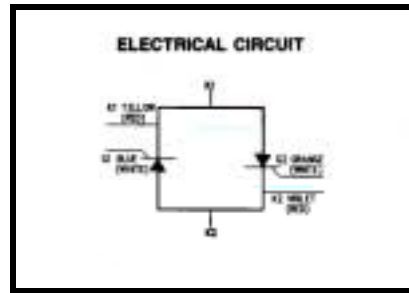
**Thermostat:**

If required add suffix J to part number.

**MOV:**

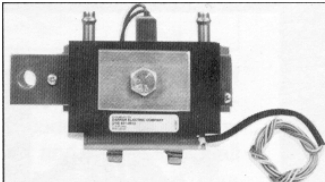
For MOV add suffix M to part number.

**Example: D08HS6-12JM, 1200 Amps RMS, 1200 Volt, with thermostat and MOV.**



## DIRECT WATER COOLED UNITS

Undoubtedly the most popular resistance welding contactor for the past twenty years are the direct water-cooled SCR Contactors.



The selections shown are in factory stock in welding current ratings to 3200 Amps RMS. Choose between single or double sided cooled, and in SCR voltages to 2000 Volts. These are the workhorse in medium to heavy KVA welding controllers.

PART NUMBER	WELDING RATING Amps RMS AT 50% DUTY CYCLE	WELDING RATING Amps RMS AT 100% DUTY CYCLE	SGL. CYCLE SURGE CURRENT (ITSM)	SCR VOLTAGE RATING (PIV) (VRRM)	WATER COOLED	
					SGL SIDE	DBL SIDE
D09ST15	900	400	5500	1500	X	-
D09ST18	900	400	5500	1800	X	-
D13DT15	1300	700	5500	1500	-	X
D13DT18	1300	700	5500	1800	-	X
D13SE18	1300	610	7500	1800	X	-
D13SE20	1300	610	7500	2000	X	-
D18SM18	1800	975	11200	1800	X	-
D18SM20	1800	975	11200	2000	X	-
D18DE18	1800	970	7500	1800	-	X
D18DE20	1800	970	7500	2000	-	X
D21DM18	2100	1225	9000	1800	-	X
D21DM20	2100	1225	9000	2000	-	X
D22SN18	2200	1300	21000	1800	X	-
D22SN20	2200	1300	21000	2000	X	-
D23DM20	2300	1425	11200	1800	-	X
D23DM20	2300	1425	11200	2000	-	X
D26DN18	2600	1710	16400	1800	-	X
D26DN20	2600	1710	16400	2000	-	X
D32DN18	3200	2075	21000	1800	-	X
D32DN20	3200	2075	21000	2000	-	X

**Water Requirements:**

Amps RMS is achieved with a cooling Flow rate of 1.2 gallons per minute at 40°C water temperature.

**Water Connection:**

Fits 3/8 inch hoses.

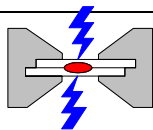
**Thermostat:**

If required add suffix J to part number.

**MOV:**

For MOV add suffix M to part number.

**Example: 13DT15JM, 1300 Amps RMS, 1500 Volt, with thermostat and MOV.**

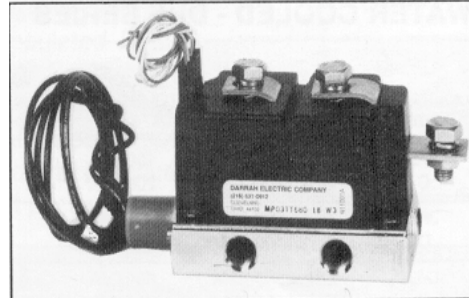


## Resistance Welding Equipment & Supply Co.

2045 East 46th Street Indianapolis, IN 46205-1472  
 Phone: (317) 251-9406 Fax: (317) 251-9407 e-mail: rwesco@iquest.net  
 Visit us on the World Wide Web at: www.spotweldequip.com

## INDIRECT WATER COOLED SCR CONTACTORS

This product line features industry standard dual SCR modules with integral water cooled bases. Our improved de-sign has eliminated thermal barriers associated with separate cooling bases. This has increased current ratings by as much as 15%. In addition, because the water connections are directly tapped to the module base, water leaks are virtually eliminated. To further enhance water integrity, each unit is 100% pressure tested at 150 PSI for one minute. Another significant feature is that the modules are vacuum filled with a high performance, flame retardant silicone-based material at final assembly which eliminates hidden voids inside the package and prevents dust and dirt from penetrating which may cause premature failure. Our modules are recognized under the Recognized Component Program of Underwriters Laboratories, Inc. USA.



2" X 2" X 4-1/2" BLOCK UNIT

PART NUMBER	WELDING RATING Amps RMS AT 10% DUTY CYCLE	WELDING RATING Amps RMS AT 50% DUTY CYCLE	WELDING RATING Amps RMS AT 100% DUTY CYCLE	SGL. CYCLE SURGE CURRENT (ITSM)	SCR VOLTAGE RATING (PIV) (VRRM)	WATER CONNECTION LOCATION
Q20001	1720	1100	680	8100	1800 V	SIDE 1-1/2" Centers
Q20002	1720	1100	680	8100	1800 V	BOTTOM 1-1/2" Centers
Q20003	1720	1100	680	8100	1800 V	SIDE 2" Centers

### Water Requirements:

Amps RMS is achieved with a cooling flow rate of 1.2 gallons per minute at 40°C water temperature.

### Water Connections:

1/4-18 NPT tapped holes.

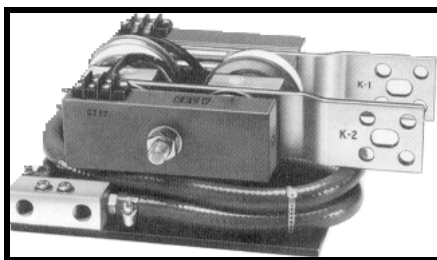
### Thermostat:

All modules are supplied with an encapsulated thermostat sensor, 50°C open on rise and isolated to base to 2000 Volts. Thermostat leads are 24 inches long.

**Options Include:** R/C Snubber, MOV's Bus Bars.

## AUTOMOTIVE STYLE SCR CONTACTORS

Automotive Style SCR Contactors are the chosen favorite among high current/high voltage resistance welding users. All contactors are rated at 100% continuous and are provided with 2600 Volt SCR'S. This Series is popular for frequency converter, seam, and flash buff welding applications.



PART NUMBER	WELDING RATING Amps RMS AT 100% DUTY CYCLE	SGL. CYCLE SURGE CURRENT (ITSM)	SCR VOLTAGE RATING (PIV) (VRRM)	TANG TYPE
DPH7825-468	1200	10,000	2600	C
DPH7330-468	1700	10,000	2600	A
DPH7331-468	1700	10,000	2600	B
DPH7844-468	1700	10,000	2600	C
DPH7845-468	1750	18,000	2600	C
DPH7517-468	2500	18,000	2600	A
DPH7477-468	2500	18,000	2600	B
DPH7824-468	2500	18,000	2600	C

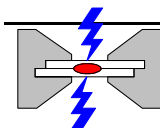
### TANG TYPE DESCRIPTION:

- A) Single Hole: Chrysler design, one .5" diameter hole centered in bus tang.
- B) Four Hole: General Motors design, four holes on 1.06" centers.
- C) Four Hole Plus Slot: Fisher/Ford design, four holes on 1.06" centers .5" x .75" center slot.

**Water Requirements:** Amps RMS is achieved with a cooling flow rate of 1.2 gallons per minute at 40°C water temperature.

**Water Connection:** 1/4-18 NPT tapped holes.

**Thermostat:** All contactors are supplied with a thermostat sensor 70° C open on rise, re-closes at 58°C, and is isolated to base to 2000 Volts. Thermostat leads are 12 inches long.



## Resistance Welding Equipment & Supply Co.

2045 East 46th Street Indianapolis, IN 46205-1472

Phone: (317) 251-9406 Fax: (317) 251-9407 e-mail: [rwesco@iquest.net](mailto:rwesco@iquest.net)

Visit us on the World Wide Web at: [www.spotweldequip.com](http://www.spotweldequip.com)